



CeLSIUS

CENTRE FOR LONGITUDINAL STUDY
INFORMATION & USER SUPPORT

The ONS Longitudinal Study

Presented as part of: *Introducing longitudinal population studies: The ONS Longitudinal Study and the Longitudinal Study of Young People in England 2*

A CLOSER webinar; Nov 10th 2022

Jim Newman¹, Oliver Duke-Williams²
(thanks Rebecca Jathoonia¹, Nicola Shelton²)

1. Office for National Statistics
2. UCL



Contents

- Examples of LS research
- How to access the data
- The 2021 beta test programme



Examples of LS research

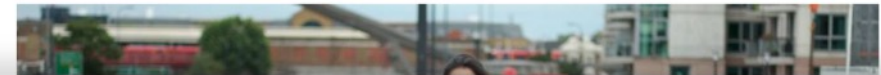


CeLSIUS

Being a Muslim in Europe: attitudes and experiences Karlsen et al

VIDEO

Black Lives Matter: 'Little success since Seventies' in fight against workplace racism



Will Humphries, Southwest
Correspondent



NEWS SPORT ENTERTAINMENT SOAPS LIFESTYLE PU: Will Humphries, Southwest Correspondent
SEX HEALTH PROPERTY FASHION FOOD TRAVEL HOROSCOPES

Advertisement



Ethnic minorities have fewer job opportunities due to 'societal racism', says new study

Comment

Faima Bakar
Sunday 14 Jun 2020 12:29 pm

Support the Guardian
Available for everyone, funded by readers
Subscribe → Contribute →

Search jobs Sign in Search **The Guardian** UK edition
News Opinion Sport Culture Lifestyle More ▾

World ▶ Europe US Americas Asia Australia Middle East Africa Inequality Global development

Race and money
Race

This article is more than 2 years old

'Persistent racism' still mars job prospects for BAME Britons

Study of census data from 1970s to 2000s shows ethnic minorities are far less socially mobile than white counterparts

Jamie Doward

Sun 14 Jun 2020 08:15 BST



Men from ethnic minority groups are far more likely than white men to be in low-paid manual work. Photograph: Kirsty Wadsworth/AP

Advertisement

nanit

A complete picture of your baby well-being



Nanit Pro Complete Baby Monitoring Sys

★★★★★ 4.3/5

£265.00 [Shop now](#)

Evidence quoted in the independent review of children's social care, Sacker et al



- adults who spent time in care between 1971-2001 were 70% more likely to die prematurely than those who did not, and also more likely to experience an unnatural death (self-harm, accidents, and mental and behavioural causes)
- lower rates of long term illness and higher rates of employment for adults with a history of kinship care compared to those that grew up in foster or residential care
- care leavers who were in residential care have the highest prevalence of limiting long term illnesses (around 32% on average), followed by adults who lived in foster care (around 16% on average) and adults who lived in kinship care (12% on average) compared with individuals who have not been in care (7%)

Declining social mobility

Hecht et al for the Sutton Trust

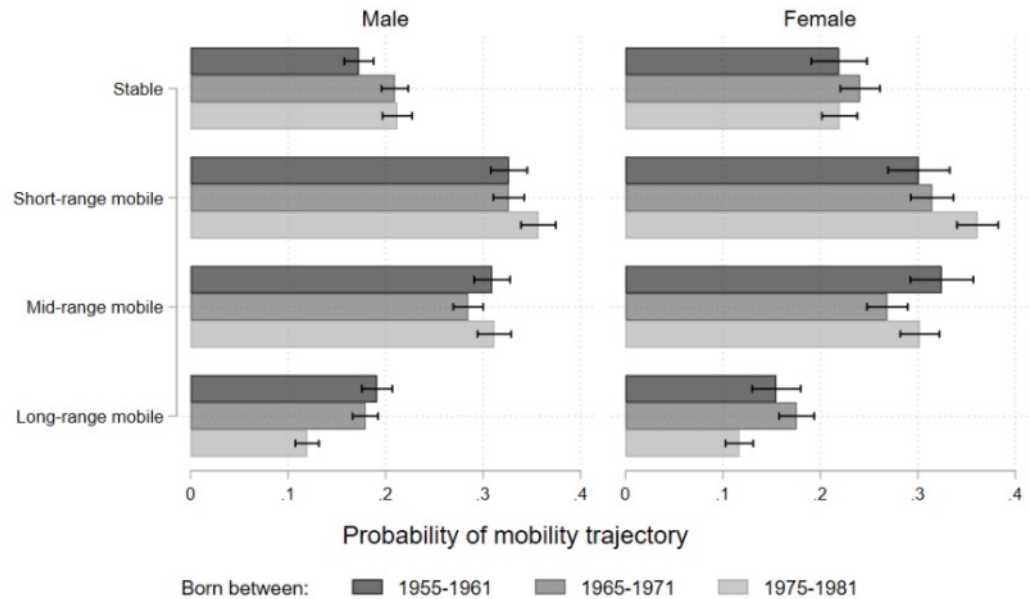
ELITES IN THE UK: PULLING AWAY?

Social mobility, geographic mobility and elite occupation

Katharina Hecht, Daniel McArthur, Mike Savage and Sam Friedman
- January 2020



Figure 13: Social mobility trajectory into higher professional and managerial occupations by cohort and gender





How to access the data

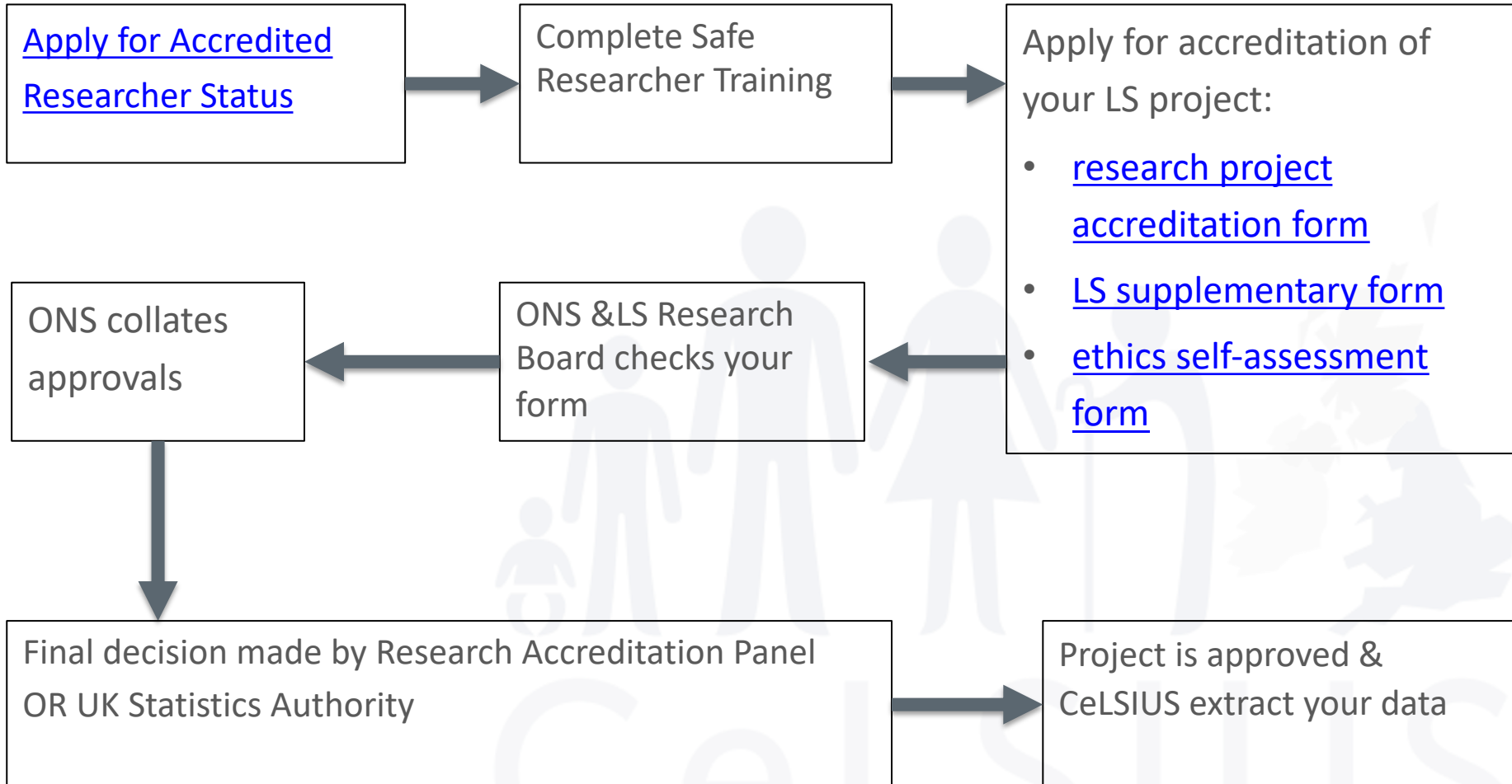


CeLSIUS

Who can access LS data?

Available for free to all researchers BUT

- Research must be in public interest
- Protection of confidentiality of data relating to individuals in LS is crucial
- Researchers must apply for access



Where can I access LS data?

SRS safe settings

- Hampshire (Titchfield)
- Wales (Newport)

Institution with Assured Organisational Connectivity agreement

- SRS in office
- Institution owned computer at home (sign extended Security Operations Procedures document & get ONS approval)

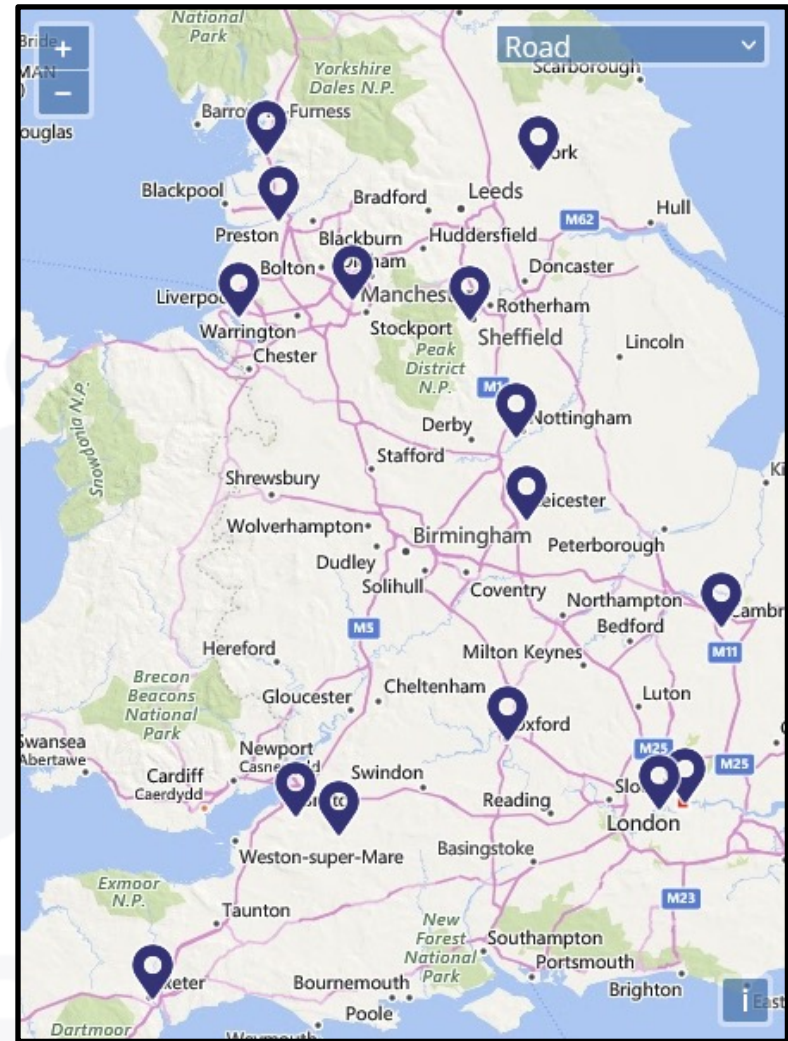
Remote access

- Send code to CeLSIUS
- We send output

University-based safe pods

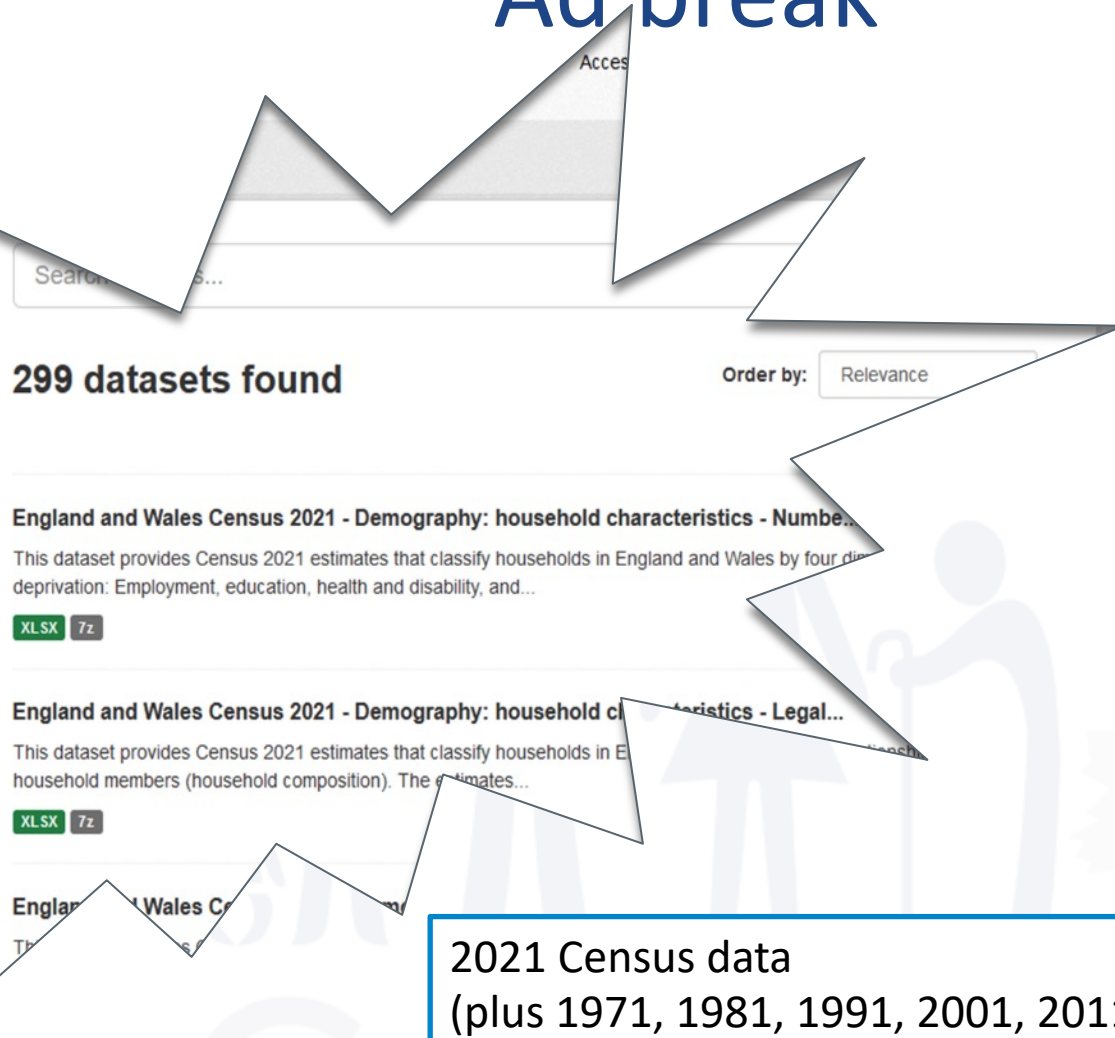
- 2022 onwards

Safepods



Source: <https://safepodnetwork.ac.uk/>

Ad break



Search for datasets...

299 datasets found Order by: Relevance

England and Wales Census 2021 - Demography: household characteristics - Number...
This dataset provides Census 2021 estimates that classify households in England and Wales by four dimensions of deprivation: Employment, education, health and disability, and...
XLSX 7z

England and Wales Census 2021 - Demography: household characteristics - Legal...
This dataset provides Census 2021 estimates that classify households in England and Wales by household members (household composition). The estimates...
XLSX 7z

England and Wales C...
The...

2021 Census data
(plus 1971, 1981, 1991, 2001, 2011)

Now available via
<https://statistics.ukdataservice.ac.uk/dataset/>



Beta test



CeLSIUS

Beta testing the 2021 data

A beta test will

- Test the data for accuracy etc.
- Inform the decision whether to release the data

About the beta test programme

- Up to ten test projects
 - Early access to data
 - Involvement with public launch
 - Able to publish when data are released more widely
- Timeline
 - Applications: to end Jan 2023
 - Data available to successful projects: mid 2023 (?)
 - End of testing period: late 2023 (?)
 - Full release: late 2023 / early 2024 (?)

Beta test selection criteria

- All projects *must*
 - Include a longitudinal element
 - Include at least one experienced LS user
 - Quantify the effect of item imputation
 - Produce outputs for England and Wales separately as well as combined
 - Obtain the accreditation required by the Secure Research Service

Selection criteria ctd.

- The set of projects will cover certain areas
 - 1. New questions in 2021** – sexual orientation, gender identity and armed forces veterans
 - 2. Migration and mobility** – address one year ago, second address, workplace address (COVID-19 relevance?)
 - 3. International migration** – address one year ago, month and year of arrival, intended length of stay, passport(s) held (Brexit relevance?)

Selection criteria ctd.

- Continued...
 - 4. Identity and ethnicity** – national identity, main language, English proficiency, passport(s) held (first opportunity to look at individual transitions), religion, ethnicity
 - 5. Household composition and relationships** within the household (COVID-19 relevance?)
 - 6. Occupation coding** and NS-SEC classifications

Selection criteria ctd.

- Continued...
 7. General **health** and limiting long-term illness
 8. **Caring** – including transitions in caring responsibilities between censuses and analysis of the impact of the change to the response scale (COVID-19 relevance?)
 9. **Mortality** – particular focus on 2020 and 2021 checking outcome of new process to link deaths (COVID-19 relevance?)

Desirable additional criteria

- Intention to replicate the same or very similar research using one or both of our sister studies in Scotland and Northern Ireland
- Involve collaboration between academic groups and government departments or other relevant external agencies where possible
- Address themes of key interest to government departments such as:
 - the impact of the COVID-19 pandemic
 - the effects of the UK leaving the European Union
 - topics such as social mobility, ageing, caring and migration

Beta test applications

- More info:
 - <https://www.ons.gov.uk/aboutus/whatwedo/paidservices/longitudinalstudyls/longitudinalstudycensus2021linkagebetatest>
 - https://bit.ly/lS2021_beta_test





The permission of the Office for National Statistics to use the Longitudinal Study is gratefully acknowledged, as is the help provided by staff of the Centre for Longitudinal Study Information & User Support (CeLSIUS). CeLSIUS is supported by the ESRC Census of Population Programme (Award Ref: ES/V003488/1). The authors alone are responsible for the interpretation of the data.

Census output is Crown copyright and is reproduced with the permission of the Controller of HMSO and the Queen's Printer for Scotland.

